



University of Pittsburgh

*Department of Property Management
127 North Bellefield Avenue
Pittsburgh, PA 15213
412-624-9900
Fax: 412-624-9988*

www.ocl.pitt.edu

Conveniently located
next to the University of
Pittsburgh School of Medicine,
Scaife Hall, Salk Hall, the
Petersen Events Center, and the
UPMC network of hospitals



Darragh Street Apartments



Next to Scaife
Hall, School
of Medicine,
and UPMC
Hospitals

The University of Pittsburgh is an affirmative action, equal opportunity institution. Published in cooperation with the Department of University Marketing Communications. UMC26241-0207.

Darragh Street Apartments



Welcome to Darragh Street Apartments located on the University of Pittsburgh's upper campus.

Features:

This inviting complex is within walking distance of Scaife Hall and UPMC hospitals and provides preferred housing to University of Pittsburgh medical students.

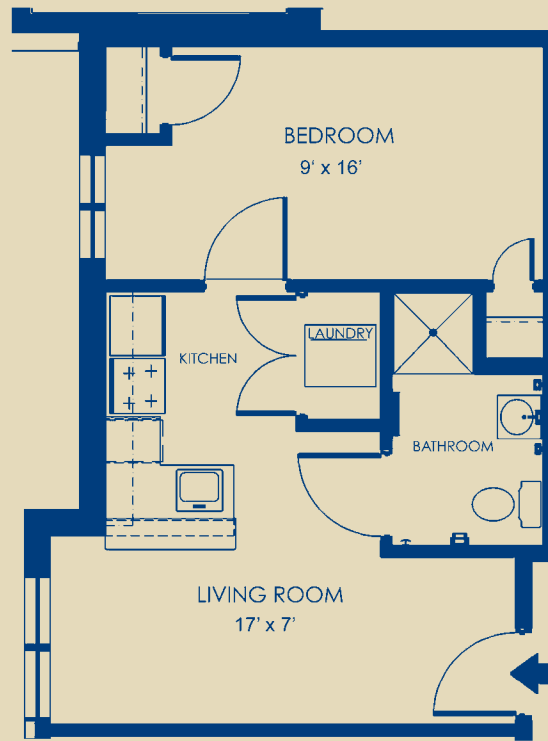
The facility, which is fully accessible, offers the convenience of an urban location, the comfort of a garden-style setting, and the choice of one- and two- bedroom layouts.

For your comfort and convenience, each unit includes individually controlled heating and air conditioning; a washer and dryer; and a fully equipped kitchen including a dishwasher, garbage disposal, and microwave, as well as window blinds.

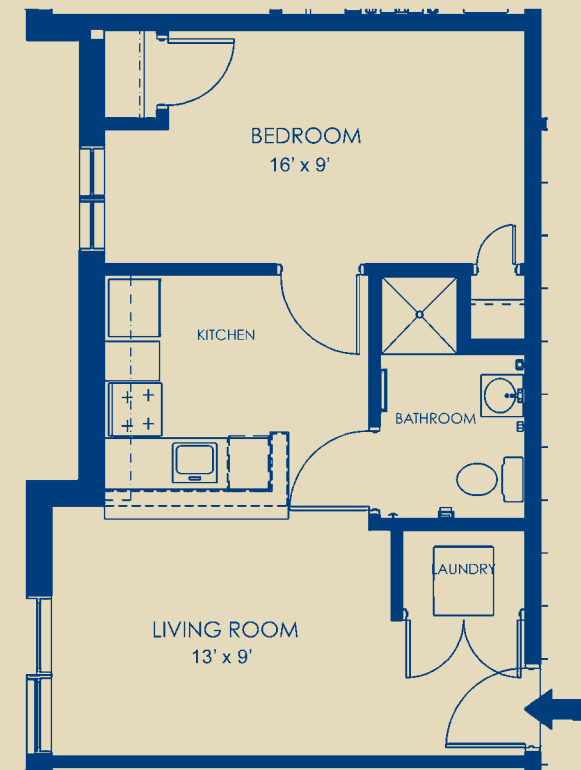
As a resident, you also will enjoy basic cable service in the living room and bedroom(s), and high-speed wired ethernet ports and wireless ethernet service will keep you connected to the Internet and other services via PittNet, the University's high-speed network. You also will enjoy card access security and 24-hour emergency maintenance.

For more information:

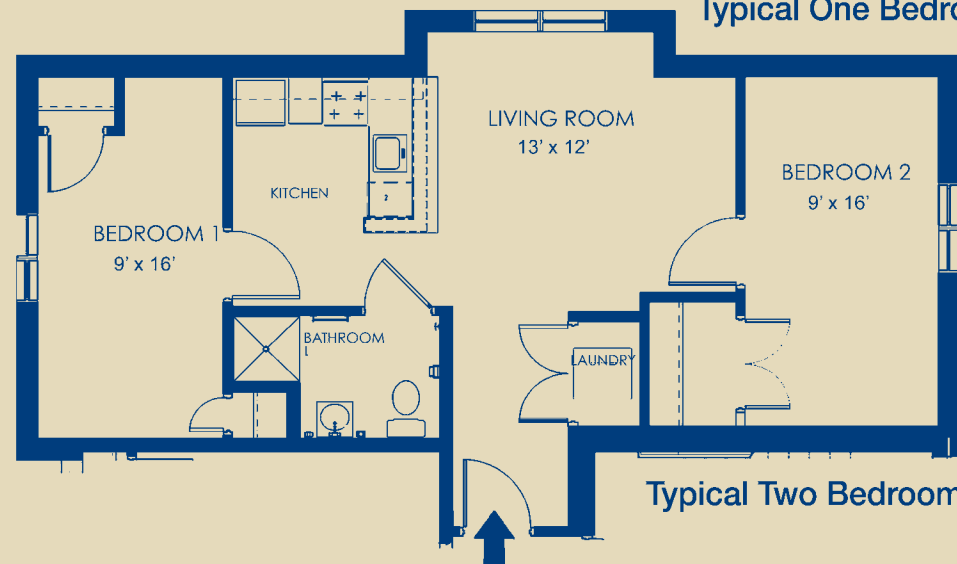
Call the University of Pittsburgh Department of Property Management at 412-624-9900, Monday through Friday, 8 a.m.–4:30 p.m., or stop by and visit us at 127 North Bellefield Avenue. You also may visit us on the Web at www.ocl.pitt.edu, select "Apartment Listings," then "University-Owned Apartments."



Typical One Bedroom, Style A



Typical One Bedroom, Style B



Typical Two Bedroom